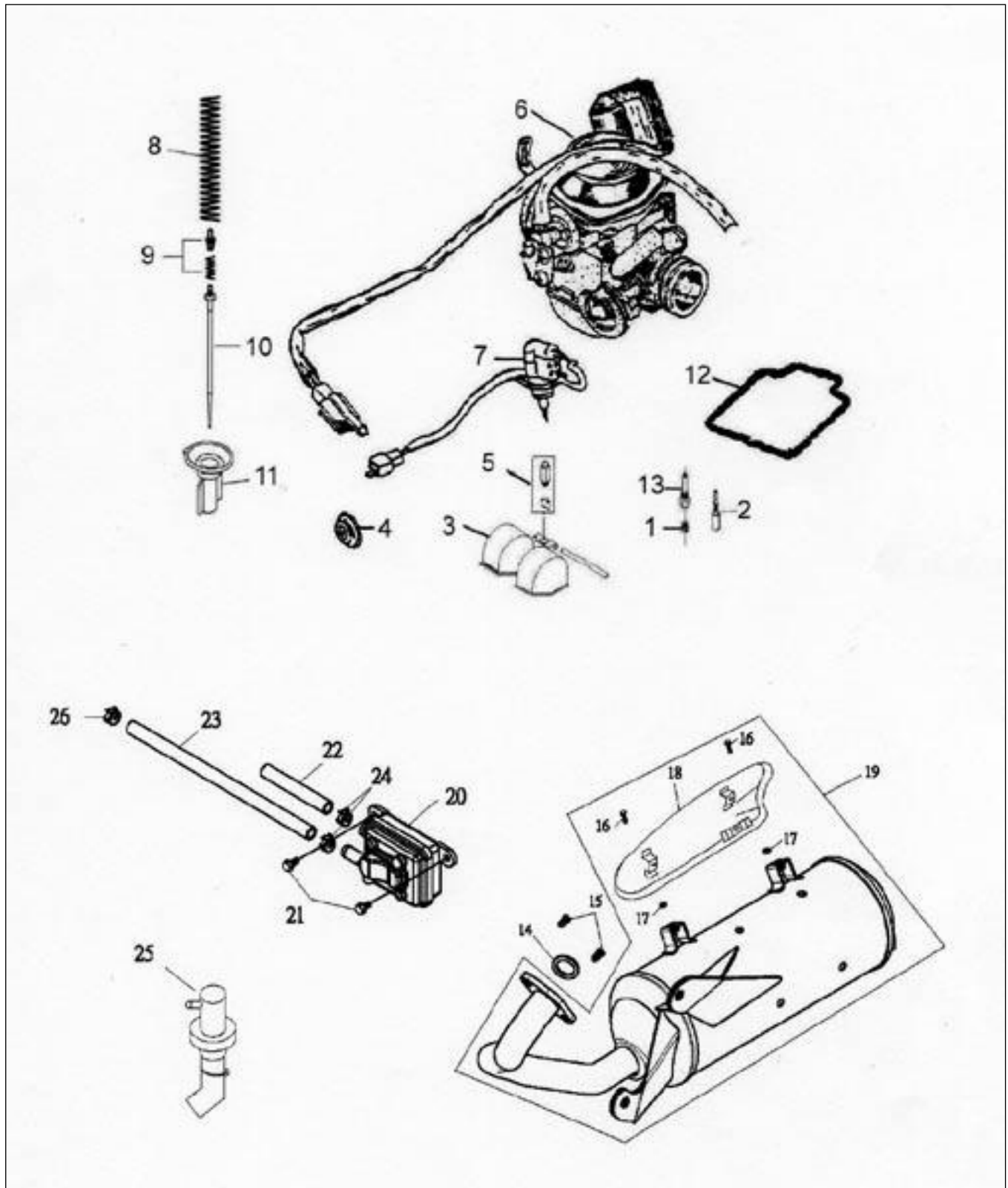


EXHAUST MUFFLER, CARBURETOR



20: EXHAUST MUFFLER, CARBURETOR

ITEM NO.	PARTS NO.	UNIT QUANTITY	PARTS NAME	NOTES
1	16108-197-00B	1	MAIN NOZZLE	
2	16110-120-000	1	PILOT JET	#35
3	16118-120-000	1	FLOAT	
4	16048-120-000	1	PLUNGER FILM	
5	16117-197-000	1	NEEDLE VALVE SET	
6	16100-197-000	1	CARBURETOR ASS'Y (KENHIN CVK)	NOZZLE #108
7	17215-197-000	1	PLUNGER STARTER	
8	16102-197-000	1	THROTTLE VALVE SPRING	
9	16037-120-000	1	VALVE PLATE SET	
10	16104-197-000	1	NEEDLE SET	4HGCG
11	16103-197-000	1	VACUUM PISTON	
12	16106-120-000	1	FLOAT CHAMBER SEAL	
13	16105-120-000	1	NEEDLE NOZZLE	
14	18291-101-000	1	EXHAUST PIPE GASKET	
15	90301-06000C	2	NUT CAP	6MM
16	93701-06016	2	PAN FLAT HEAD PHILLIPS BOLT	6*16
17	94114-0716020	2	PAPER PLAIN WASHER	7*16*2
18	18301-250-000	1	PROTECTOR COMP MUFFLER	
19	18300-250-00A	1	EXHAUST PIPE ASS'Y (CATA)	
20	17410-127-000	1	REED VALVE COMP	
21	96000-06016-10G	2	HEX FLANGE BOLT	6*16
22	17411-116-00A	1	REED VALVE COMP IN. PIPE	
23	17412-127-000	1	REED VALVE COMP EX. PIPE	340MM
24	94513-18000	2	SPRING CLAMP	18MM
25	1736A-175-000	1	CATCH TANK COMP	
26	94513-16000	2	SPRING CLAMP	16MM